



## The Client

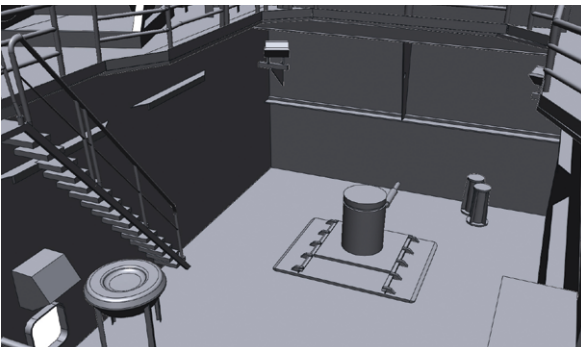
Dynamic Equipment Company (DEC) is a specialist engineering services company, working in the offshore and onshore oil industry. Based in Aberdeen, the company offers bespoke mechanical handling solutions, such as cranes and lifting equipment, to clients across the world.

## Summary

DEC has long been at the forefront of technology in its industry. With a focus on accuracy, DEC first used solid modelling packages to replicate client installations, which gave a high degree of flexibility for developing new products and bespoke solutions.

However, with the company moving into 3D surveying to measure client's offshore and onshore drilling installations, DEC was capturing more data than ever before.

While the scanning offered a high degree of accuracy, the process of translating that information into solid models was time consuming and expensive. Simply put, the 3D scanning equipment offered more data than could be easily processed using their current systems.



Oil Rig CAD model



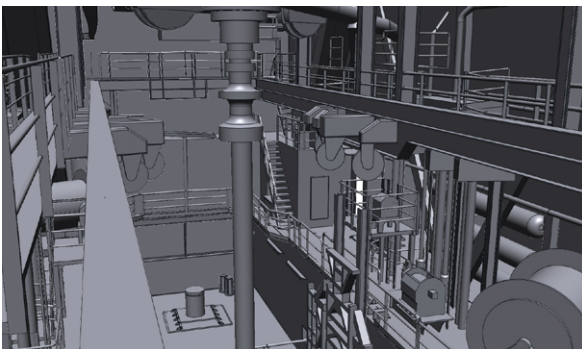
- 3D laser scanning technologies
- Inspection services
- Reverse engineering services
- 3D CAD modelling
- Portable on-site services
- Cost effective 3D solutions provider

**When it comes to fitting the equipment,  
the high-tech, 3D process has significant cost,  
time and safety benefits ”**

## The Solution

Using an orbital laser scanner, DEC's experienced team continues to carry out the equipment site surveys but this information is now passed to OR3D who use Geomagic Design X to create highly accurate, 3D CAD models.

These computer generated, CAD models are more accurate, time efficient and effective than solid models, meaning that DEC's engineering team can quickly get to work in designing a solution based on real world data.



Oil Rig CAD model

## Client Comments

*Richard Hay, founding partner of DEC said: "By scanning the work area, one person can make an accurate, detailed survey in a day. What's more, that day will collect 100 times more data than a team using traditional methods would be able to take in four days.*

*"Our problem was that having collected so much data, we needed to be able to translate it into accurate drawings and models, which is where James Earl's team at OR3D come in. They translate the data into 3D CAD drawings, which we can share with our clients and engineers to use in the design and manufacture process."*

*When it comes to fitting the equipment, the high-tech, 3D process has significant cost, time and safety benefits, Richard explained.*

*"Such is the accuracy of the scanning equipment, we can be confident that the new or upgraded equipment will fit without clashing first time," he said. "This makes the whole process safer and more efficient, saving us and our clients time and lost productivity."*

**DEUK**Ltd



T +44 (0)1691 777 774  
E info@or3d.co.uk

OR3D 2 The Sawmill, Brynkinalt Business Centre,  
Chirk, Wrexham. LL14 5NS. United Kingdom.

[www.OR3D.co.uk](http://www.OR3D.co.uk)