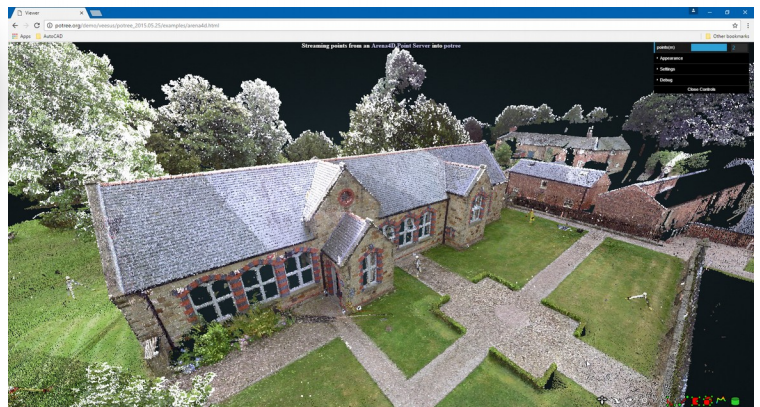


Point Server



- **UNLIMITED POINT CLOUDS**

A powerful point cloud engine allows you to work in real time on all data sets without constraint or compromise.

- **STREAM**

Access any point cloud data from any remote location.

- **4G MOBILE**

View any point cloud over the internet on a mobile device.

- **WEB**

Stream point clouds to any modern web browser on mobile or desktop devices.

- **DESKTOP CLIENTS**

Supports all Veesus desktop products such as Data Studio and Point Clouds for Rhino.

The Arena4D Point Server is a powerful software solution that allows you to set up your own Data Server to share your scan data with your team, customers and partners.

Once you've set-up your Point Server and added your scan data, others can easily view it over your company network or over the internet, even to mobile devices and to multiple users.

Once connected to the Point Server the client / user can view and use the scan data in Arena4D Data Studio, Arena4D for Rhino or in a Web Browser.

System Requirements

OS - Microsoft Windows 7

CPU - 2.0GHZ Dual Core

RAM - 2GB

HDD - 100MB (for installation)

Network - HTTP compliant

For best performance we recommend a quad core processor, 8GB RAM and an SSD disk drive.

